

Algorithm Marketplace

- Protocol Customers
- Developer Community



Protocol Customers request machine learning prediction and look for suitable algorithms, or ask for a customized algorithm in our Algorithm Marketplace. The supply of algorithms is crowdsourced in our Developer Community.

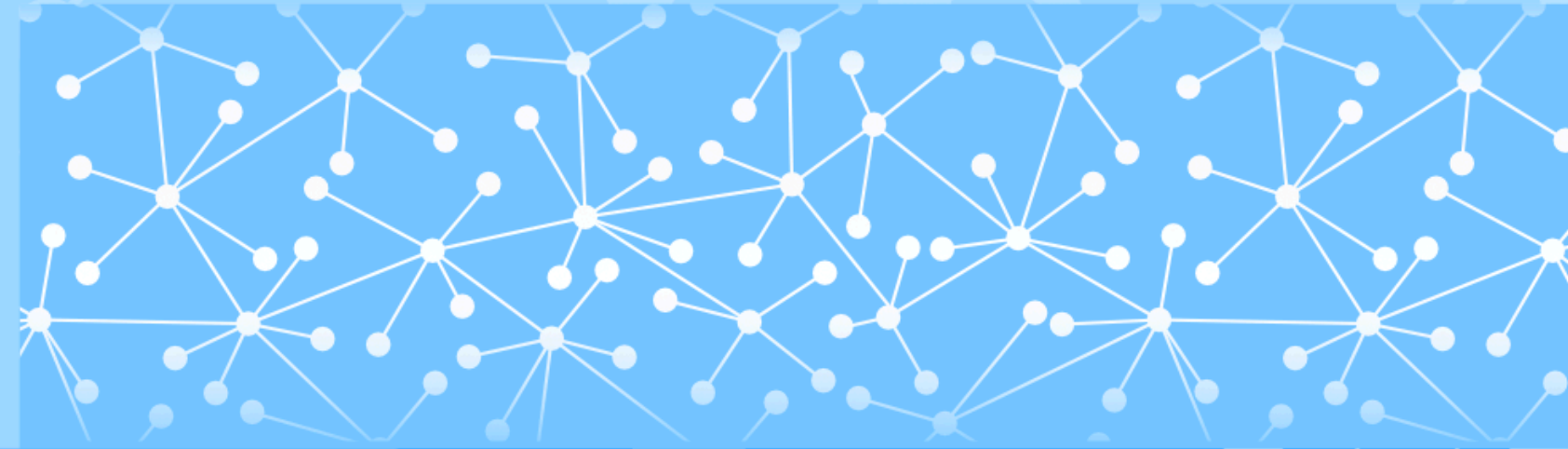
Decentralized Nodes

- Report Nodes



Report Nodes further average the encrypted results processed by the Federated Nodes and generate an encrypted final report to the protocol customers. Storage will be in a distributed file system like IPFS.

- Distributing Nodes
- Federated Nodes
- Algo Refining Nodes



Distributing Nodes identify and distribute the encrypted algorithms to individual devices. Federated Nodes collect, aggregate and average all connected local prediction results by Federated Learning. Algo Refining Nodes collect, aggregate and average the updates by algorithm trainers to generate improved algorithms.

Individual Devices

- Smartphones
- Tablets
- PCs



Data owners of Individual Devices can authorize specific types of datasets for algorithms to be run in our DML App. Data will be kept within the devices without transferring to any third parties or being stored in the cloud server. Thus privacy of data will be well protected. They can also allow algorithms to be run on their authorized datasets for participation of algorithms improvement as algorithm trainers.